

General Manager Newsletter

North Attleborough Electric Department



MAY 2022

Monthly Update of North Attleborough Electric Department's Activities

Dear Friends,

On behalf of the Board of Electric Commissioners (Chairman John Casey, Vice Chairman Dale Langille, Commissioner Steven Cabral, Commissioner John Gould, & Commissioner Craig Cameron), it is a pleasure to provide this month's update relative to NAED Events and Activities.



**Our MAY 2022 Calendar winner is
Ahmad-Zayd Kinjawi
Roosevelt School-Grade 3**

NAED is one of only forty (40) municipal electric departments within the Commonwealth of Massachusetts established under the provisions of M.G.L.c. 164. We are committed to promoting the interests of "Public Power" on behalf of the citizens of this community.

275 Landry Avenue
North Attleborough, MA 02760
Telephone: 508-643-6300
Fax: 508-699-5603 www.naelectric.com



I. Board of Electric Commissioners Elected

The town wide vote on April 5, re-elected two commissioners to our Board, Mr. John Gould and Mr. Steven Cabral. This will be the second term for Mr. Gould and third term for Mr. Cabral. The three other current Board members are Mr. Dale Langille, Mr. Craig Cameron, and Mr. John Casey. The Board voted to appoint as Chairman John Casey and Vice Chairman Dale Langille at its meeting on May 3. The Board meets monthly and we are happy to be back in person as of our March 2022 meeting. The agenda, meeting dates and times are posted on the Town Website www.nattleboro.com and the North Attleborough Electric website at www.naelectric.com. Additionally the meetings can be viewed at North TV's website, see below.

II. What's up with energy prices and what does it mean for North Attleborough Electric customers?

It's very likely that you've seen and heard of prices of nearly everything going up, and for NAED we are most concerned with current energy prices. When we refer to energy, we are referring to the cost of power production at its source; power plants such as natural gas, nuclear, wind, solar, and hydro. There is also a cost to transmit power long distance (transmission), a cost to deliver power locally (distribution), and a cost to ensure there are enough resources to go around (capacity).

The largest factor influencing energy costs in power production right now is Natural Gas prices. NAED has fixed priced contracts for about 65% of our energy needs (Mega-Watt Hours), however about 50% of the cost of our energy is impacted by current market volatility.

Plain talk - Good news and bad news: NAED has been able to build up our Rate Stabilization fund over the past 10 years, and at current projections, it can help protect our customers from shock rate increases, but not forever if prices remain high long-term. Other communities have already started to roll out a Power Cost Adjustment (PCA) charge and rate hikes. NAED's Board has a few tools at its disposal to help customers. We are nearing completion of our Cost of Service Study, which will see changes to our rate structure over the next few months, and we are strategizing on how to minimize exposure to energy price increases in the short-term. Stay tuned to our Board meetings for further information on this topic.

III. NAED Online Services



How do I? At the NAED website, www.naelectric.com, you may set up online payment methods. These can include Auto-pay for your account. Under Quick Links, select View/Pay My Bill to begin setting these up for your use. As a reminder, NAED staff are not able to access your on-line auto pay account and therefore are not able to update your credit card information. If your credit card information changes, such as expiration date, please use the online services to update your account.

IV. NAED Commissioners Meetings can be viewed at North TV's website

NAED BOELC meetings can be viewed on North TV at <https://government.northtv.net/electric-commission>

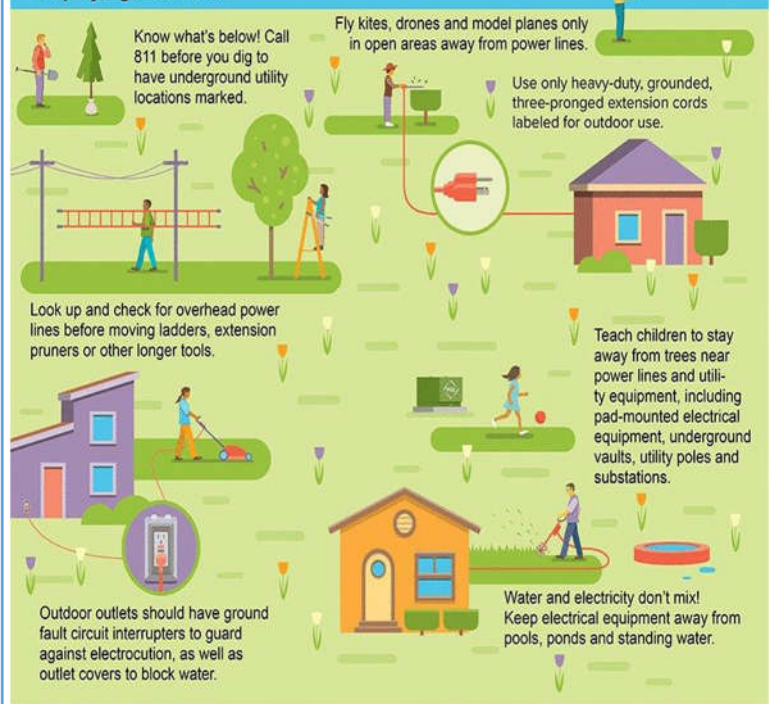
NAED also films several episodes of the North Attleborough Electric Show every year on such topics as Energy Efficiency, Good Neighbor Energy Fund and we highlight different departments at NAED that contribute to the success of our utility. We will be filming our Spring episode on May 5! Check out more here:

<https://community.northtv.net/north-attleborough-electric-show>

V. SPRING SAFETY TIPS

Make it a safe spring

How you can avoid electrical accidents when working or playing outdoors.



VI. Energy Efficiency

AIR SOURCE HEAT PUMP REBATES

NAED offers rebates for installing Ducted and Ductless Air Source Heat Pumps. Receive up to \$1,000, based on the size of your units. If you are replacing an old system, we provide an additional \$300. The system must meet certain SEER and HSPF ratings.



Visit www.naelectric.com for more information.

VII. Good Neighbor Energy Fund


The Massachusetts Good Neighbor Energy Fund is available to any Massachusetts resident who, because of temporary financial difficulty, cannot meet a month's energy expense and is not eligible for state or federal energy assistance. Income must fall between 60% and 80% of the state's median income levels. You may qualify for up to \$300 in assistance. For income guidelines please visit:

<http://magoodneighbor.org/assistance.html> or call NAED at 508-643-6376 for more information.



FIND US ONLINE AT:

 North Attleborough Electric Department

 @NAEDNews

 @WeAreNAED



Please continue to remember our fellow citizens who are defending our country throughout the world. As always, should you have any questions at any time, please feel free to contact me at 508-643-6300.

Sincerely, Peter Schiffman, General Manager